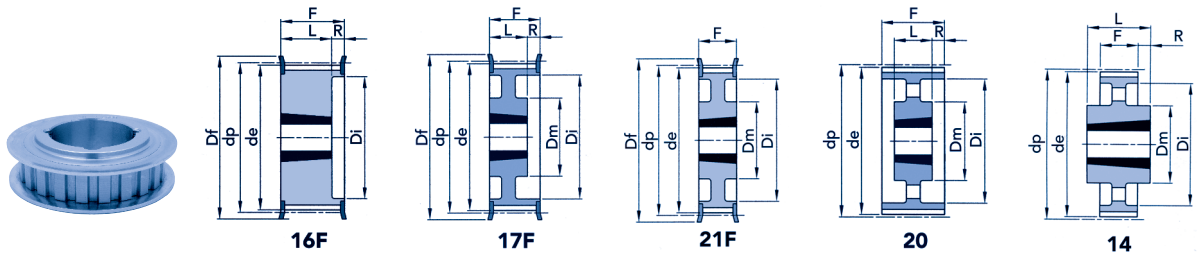


tandriemschijven H voor klembus
poulies dentées à moyeu amovible type H
H 100 stap / pas 1/2" (12,7 mm)
25,4 mm riembreedte / largeur



code	type	Z*	klembus moyeu	max. boring alésage max.	dp	de	Df	Dm	Di	F	L	R	flens nr. n° de flasque	Kg
TL 16 H 100	16F	16	1108	28	64,68	63,31	71	-	45	31,0	22,0	9,0	311	0,42
TL 18 H 100	16F	18	1210	32	72,77	71,39	79	-	52	31,0	25,0	6,0	313	0,49
TL 19 H 100	16F	19	1210	32	76,81	75,44	83	-	56	31,0	25,0	6,0	314	0,62
TL 20 H 100	16F	20	1210	32	80,85	79,48	87	-	60	31,0	25,0	6,0	315	0,73
TL 21 H 100	16F	21	1210	32	84,89	83,52	91	-	64	32,0	25,0	7,0	316	0,80
TL 22 H 100	16F	22	1210	32	88,94	87,56	93	-	67	32,0	25,0	7,0	317	0,94
TL 23 H 100	16F	23	1610	42	92,98	91,61	97	-	70	32,0	25,0	7,0	318	0,97
TL 24 H 100	16F	24	1610	42	97,02	95,65	103	-	73,5	32,0	25,0	7,0	320	1,05
TL 25 H 100	16F	25	1610	42	101,06	99,69	106	-	77	32,0	25,0	7,0	321	1,10
TL 26 H 100	16F	26	1610	42	105,11	103,73	111	-	82	32,0	25,0	7,0	322	1,20
TL 27 H 100	16F	27	1610	42	109,15	107,78	115	-	85	32,0	25,0	7,0	323	1,35
TL 28 H 100	16F	28	1610	42	113,19	111,82	119	-	90,5	32,0	25,0	7,0	325	1,50
TL 30 H 100	16F	30	1610	42	121,28	119,90	127	-	98	32,0	25,0	7,0	327	1,78
TL 32 H 100	17F	32	1610	42	129,36	127,99	135	90	106	32,0	25,0	7,0	328	2,05
TL 36 H 100	17F	36	1610	42	145,53	144,16	152	92	121	32,0	25,0	7,0	334	2,80
TL 40 H 100	17F	40	1610	42	161,70	160,33	168	92	138	32,0	25,0	7,0	338	3,65
TL 44 H 100	21F	44	2012	50	177,87	176,50	184	106	152	32,0	32,0	-	339	3,86
TL 48 H 100	21F	48	2012	50	194,04	192,67	200	106	169	32,0	32,0	-	342	4,20

materiaal: staal / matériau: acier

TL 60 H 100	20	60	2012	50	242,55	241,18	-	106	223	34,0	32,0	1,0	-	3,76
TL 72 H 100	20	72	2012	50	291,06	289,69	-	106	270	34,0	32,0	1,0	-	4,88
TL 84 H 100	20	84	2012	50	339,57	338,20	-	106	318	34,0	32,0	1,0	-	6,12
TL 96 H 100	14	96	2517	60	388,08	386,71	-	119	366	34,0	45,0	5,5	-	7,95
TL120 H 100	14	120	2517	60	485,10	483,73	-	119	462	34,0	45,0	5,5	-	10,05

materiaal: gietijzer / matériau: fonte

Z*: aantal tanden / nombre de dents