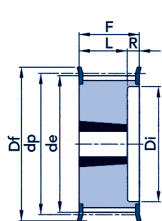
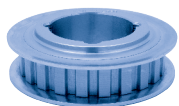
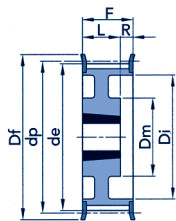


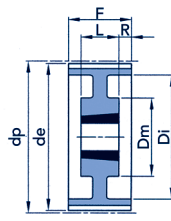
tandriemschijven voor klembussen L
poulies dentées à moyeu amovible type L
L 100 stap / pas 3/8" (9,525 mm)
25,4 mm riembreedte / largeur



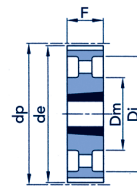
16F



17F



19



22

code	type	Z*	klembus moyeu	max. boring alésage max.	dp	de	Df	Dm	Di	F	L	R	flens nr. n° de flasque	Kg
TL 18 L 100	16F	18	1108	28	54,57	53,81	60	-	38	31,0	22,0	9,0	308	0,20
TL 19 L 100	16F	19	1108	28	57,61	56,84	63	-	38	31,0	22,0	9,0	309	0,32
TL 20 L 100	16F	20	1108	28	60,64	59,88	66	-	45	31,0	22,0	9,0	310	0,41
TL 21 L 100	16F	21	1108	28	63,67	62,91	71	-	45	31,0	22,0	9,0	311	0,45
TL 22 L 100	16F	22	1108	28	66,70	65,94	75	-	48	31,0	22,0	9,0	312	0,47
TL 23 L 100	16F	23	1108	28	69,73	68,97	79	-	52	32,0	22,0	10,0	313	0,50
TL 24 L 100	16F	24	1108	28	72,77	72,00	79	-	52	32,0	22,0	10,0	313	0,64
TL 25 L 100	16F	25	1108	28	75,80	75,04	83	-	54	32,0	22,0	10,0	314	0,68
TL 26 L 100	16F	26	1108	28	78,83	78,07	87	-	60	32,0	22,0	10,0	315	0,70
TL 27 L 100	16F	27	1108	28	81,86	81,10	87	-	60	32,0	22,0	10,0	315	0,83
TL 28 L 100	16F	28	1108	28	84,89	84,13	91	-	65	32,0	22,0	10,0	316	0,85
TL 30 L 100	16F	30	1210	32	90,96	90,20	97	-	71	32,0	25,0	7,0	318	0,90
TL 32 L 100	16F	32	1210	32	97,02	96,26	103	-	75	32,0	25,0	7,0	320	1,05
TL 36 L 100	16F	36	1610	42	109,15	108,39	115	-	86	32,0	25,0	7,0	323	1,40
TL 40 L 100	16F	40	1610	42	121,28	120,51	127	-	96	32,0	25,0	7,0	327	1,65
TL 48 L 100	17F	48	1610	42	145,53	144,77	152	92	120	32,0	25,0	7,0	334	2,80
TL 60 L 100	19	60	1610	42	181,91	181,15	-	92	166	32,0	25,0	3,5	-	2,70

materiaal: staal / matériau: acier

TL 72 L 100	22	72	2012	50	218,30	217,53	-	106	202	32,0	32,0	-	-	2,96
TL 84 L 100	22	84	2012	50	254,68	253,90	-	106	236	32,0	32,0	-	-	3,87
TL 96 L 100	22	96	2012	50	291,06	290,30	-	106	270	32,0	32,0	-	-	4,64
TL120 L 100	22	120	2012	50	363,83	363,07	-	106	343	32,0	32,0	-	-	6,37

materiaal: gietijzer / matériau: fonte

Z*: aantal tanden / nombre de dents