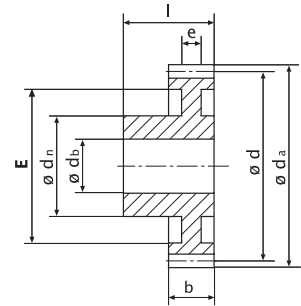
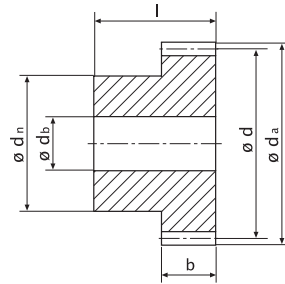
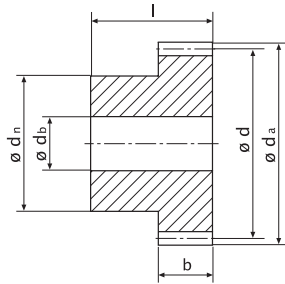


tandwielen, rechte vertanding, in kunststof
 pignons droits, en synthétique
 module **0.5**



© Aandrijvingen Gallon NV 100510

Z*	da	d	b	l	dn	db	PET	b	l	dn	db	PA6	b	l	dn	db	Hostaform C
12	7,0	6,0	-	-	-	-	-	-	-	-	-	-	3	7	4	2	119-005-012
13	7,5	6,5	-	-	-	-	-	-	-	-	-	-	3	7	4	2	119-005-013
14	8,0	7,0	-	-	-	-	-	-	-	-	-	-	3	7	5	2	119-005-014
15	8,5	7,5	-	-	-	-	-	-	-	-	-	-	3	10	6	3	119-005-015
16	9,0	8,0	-	-	-	-	-	-	-	-	-	-	3	10	6	3	119-005-016
17	9,5	8,5	-	-	-	-	-	-	-	-	-	-	3	10	8	3	119-005-017
18	10,0	9,0	-	-	-	-	-	-	-	-	-	-	3	10	8	4	119-005-018
19	10,5	9,5	-	-	-	-	-	-	-	-	-	-	3	10	8	4	119-005-019
20	11,0	10,0	-	-	-	-	-	-	-	-	-	-	3	10	8	4	119-005-020
21	11,5	10,5	-	-	-	-	-	-	-	-	-	-	3	10	8	4	119-005-021
22	12,0	11,0	-	-	-	-	-	-	-	-	-	-	3	10	10	4	119-005-022
23	12,5	11,5	-	-	-	-	-	-	-	-	-	-	3	10	10	4	119-005-023
24	13,0	12,0	-	-	-	-	-	-	-	-	-	-	3	10	10	4	119-005-024
25	13,5	12,5	-	-	-	-	-	-	-	-	-	-	3	10	10	4	119-005-025
26	14,0	13,0	-	-	-	-	-	-	-	-	-	-	3	10	10	4	119-005-026
27	14,5	13,5	-	-	-	-	-	-	-	-	-	-	3	10	10	4	119-005-027
28	15,0	14,0	-	-	-	-	-	-	-	-	-	-	3	10	10	4	119-005-028
30	16,0	15,0	-	-	-	-	-	-	-	-	-	-	3	10	12	4	119-005-030
32	17,0	16,0	-	-	-	-	-	-	-	-	-	-	3	10	12	4	119-005-032
35	18,5	17,5	-	-	-	-	-	-	-	-	-	-	3	10	12	4	119-005-035
36	19,0	18,0	-	-	-	-	-	-	-	-	-	-	3	10	12	4	119-005-036
38	20,0	19,0	-	-	-	-	-	-	-	-	-	-	3	10	12	4	119-005-038
40	21,0	20,0	-	-	-	-	-	-	-	-	-	-	3	10	12	4	119-005-040
42	22,0	21,0	-	-	-	-	-	-	-	-	-	-	3	10	12	4	119-005-042
45	23,5	22,5	-	-	-	-	-	-	-	-	-	-	3	10	12	4	119-005-045
48	25,0	24,0	-	-	-	-	-	-	-	-	-	-	3	10	15	6	119-005-048
50	26,0	25,0	-	-	-	-	-	-	-	-	-	-	3	10	15	6	119-005-050
52	27,0	26,0	-	-	-	-	-	-	-	-	-	-	3	10	15	6	119-005-052
54	28,0	27,0	-	-	-	-	-	-	-	-	-	-	3	10	15	6	119-005-054
55	28,5	27,5	-	-	-	-	-	-	-	-	-	-	3	10	15	6	119-005-055
56	29,0	28,0	-	-	-	-	-	-	-	-	-	-	3	10	15	6	119-005-056
60	31,0	30,0	-	-	-	-	-	-	-	-	-	-	3	10	15	6	119-005-060
64	33,0	32,0	-	-	-	-	-	-	-	-	-	-	3	10	15	6	119-005-064
65	33,5	32,5	-	-	-	-	-	-	-	-	-	-	3	10	15	6	119-005-065
70	36,0	35,0	-	-	-	-	-	-	-	-	-	-	3	10	15	6	119-005-070
72	37,0	36,0	-	-	-	-	-	-	-	-	-	-	3	10	15	6	119-005-072
75	38,5	37,5	-	-	-	-	-	-	-	-	-	-	3	10	15	6	119-005-075
80	41,0	40,0	-	-	-	-	-	-	-	-	-	-	3	10	15	6	119-005-080
85	-	-	-	-	-	-	-	-	-	-	-	-	-	-	-	-	-
90	46,0	45,0	-	-	-	-	-	-	-	-	-	-	3	10	15	6	119-005-090
96	49,0	48,0	-	-	-	-	-	-	-	-	-	-	3	10	15	6	119-005-096
100	51,0	50,0	-	-	-	-	-	-	-	-	-	-	3	10	15	6	119-005-100
120	61,0	60,0	-	-	-	-	-	-	-	-	-	-	3	10	15	6	119-005-120

ingrijphoek / angle d'attaque: 20°
 Z*: aantal tanden / nombre de dents