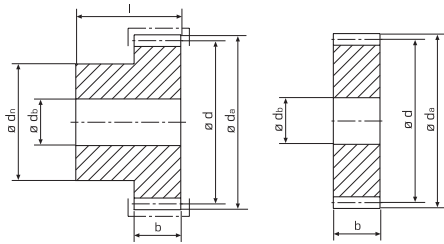


tandwielen, rechte vertanding
pignons droits
 module **5.0** (b = 40 mm)



© Aandrijvingen Gallon NV 100510

| Z* | b | l | da | d | dn | db | Kg | staal acier C45 (1.0503) | inductief gehard trempé inductif C45 (1.0503) | roestvrij inoxydable 1.4305 (X8 CrNiS 18-9) |
|-----|----|----|-------|-------|----|----|-------|-----------------------------------|--|--|
| 12 | 40 | 60 | 70,0 | 60,0 | 45 | 15 | 0,99 | 111-050-012 | - | - |
| 13 | 40 | 60 | 75,0 | 65,0 | 50 | 15 | 1,22 | 111-050-013 | - | - |
| 14 | 40 | 60 | 80,0 | 70,0 | 50 | 15 | 1,45 | 111-050-014 | - | - |
| 15 | 40 | 60 | 85,0 | 75,0 | 50 | 20 | 1,50 | 111-050-015 | 111-050-415 | - |
| 16 | 40 | 60 | 90,0 | 80,0 | 50 | 20 | 1,69 | 111-050-016 | - | - |
| 17 | 40 | 60 | 95,0 | 85,0 | 64 | 20 | 2,08 | 111-050-017 | - | - |
| 18 | 40 | 60 | 100,0 | 90,0 | 65 | 25 | 2,15 | 111-050-018 | - | - |
| 19 | 40 | 60 | 105,0 | 95,0 | 68 | 25 | 2,50 | 111-050-019 | - | - |
| 20 | 40 | 60 | 110,0 | 100,0 | 70 | 25 | 2,61 | 111-050-020 | 111-050-420 | - |
| 21 | 40 | 60 | 115,0 | 105,0 | 75 | 25 | 3,11 | 111-050-021 | - | - |
| 22 | 40 | 60 | 120,0 | 110,0 | 75 | 25 | 3,40 | 111-050-022 | - | - |
| 23 | 40 | 60 | 125,0 | 115,0 | 80 | 25 | 3,74 | 111-050-023 | - | - |
| 24 | 40 | 60 | 130,0 | 120,0 | 80 | 25 | 3,85 | 111-050-024 | - | - |
| 25 | 40 | 60 | 135,0 | 125,0 | 80 | 25 | 4,30 | 111-050-025 | 111-050-425 | - |
| 28 | 40 | - | 150,0 | 140,0 | - | 25 | 4,60 | 110-050-028 | - | - |
| 30 | 40 | - | 160,0 | 150,0 | - | 30 | 5,25 | 110-050-030 | 111-050-430 | - |
| 36 | 40 | - | 190,0 | 180,0 | - | 30 | 7,75 | 110-050-036 | - | - |
| 38 | 40 | - | 200,0 | 190,0 | - | 30 | 8,50 | 110-050-038 | - | - |
| 40 | 40 | - | 210,0 | 200,0 | - | 30 | 9,58 | 110-050-040 | 110-050-440 | - |
| 45 | 40 | - | 235,0 | 225,0 | - | 30 | 12,10 | 110-050-045 | - | - |
| 48 | 40 | - | 250,0 | 240,0 | - | 30 | 13,80 | 110-050-048 | - | - |
| 50 | 40 | - | 260,0 | 250,0 | - | 30 | 15,00 | 110-050-050 | - | - |
| 52 | 40 | - | 270,0 | 260,0 | - | 40 | 16,14 | 110-050-052 | - | - |
| 56 | 40 | - | 290,0 | 280,0 | - | 40 | 18,71 | 110-050-056 | - | - |
| 60 | 40 | - | 310,0 | 300,0 | - | 40 | 21,60 | 110-050-060 | 110-050-460 | - |
| 76 | 40 | - | 390,0 | 380,0 | - | 40 | 35,20 | 110-050-076 | - | - |
| 80 | 40 | - | 410,0 | 400,0 | - | 40 | 39,00 | 110-050-080 | - | - |
| 95 | 40 | - | 485,0 | 475,0 | - | 40 | 55,00 | 110-050-095 | - | - |
| 120 | - | - | - | - | - | - | - | - | - | - |

ingrijphoek / angle d'attaque: 20°

Z*: aantal tanden / nombre de dents