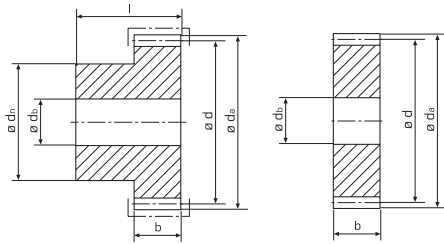


tandwielen, rechte vertanding
pignons droits
 module **4.0** (b = 32 mm)



© Aandrijvingen Gallon NV 100510

Z*	b	l	da	d	dn	db	Kg	staal acier C45 (1.0503)	inductief gehard trempeé inductif C45 (1.0503)	roestvrij inoxydable 1.4305 (X8 CrNiS 18-9)
12	32	50	56,0	48,0	36	12	0,500	111-040-012	-	-
13	32	50	60,0	52,0	40	12	0,605	111-040-013	-	-
14	32	50	64,0	56,0	44	12	0,735	111-040-014	-	-
15	32	50	68,0	60,0	45	15	0,796	111-040-015	111-040-415	111-040-615
16	32	50	72,0	64,0	45	15	0,992	111-040-016	-	-
17	32	50	76,0	68,0	50	15	1,083	111-040-017	-	-
18	32	50	80,0	72,0	50	20	1,150	111-040-018	-	-
19	32	50	84,0	76,0	50	20	1,263	111-040-019	-	-
20	32	50	88,0	80,0	50	20	1,383	111-040-020	111-040-420	111-040-620
21	32	50	92,0	84,0	60	20	1,632	111-040-021	-	-
22	32	50	96,0	88,0	60	20	1,770	111-040-022	-	-
23	32	50	100,0	92,0	60	20	1,909	111-040-023	-	-
24	32	50	104,0	96,0	60	20	2,060	111-040-024	-	-
25	32	50	108,0	100,0	60	20	2,220	111-040-025	111-040-425	111-040-625
28	32	50	120,0	112,0	70	20	3,000	111-040-028	-	-
30	32	50	128,0	120,0	80	25	3,290	111-040-030	111-040-430	111-040-630
36	32	-	152,0	144,0	-	25	3,910	110-040-036	-	-
38	32	-	160,0	152,0	-	25	4,400	110-040-038	-	-
40	32	-	168,0	160,0	-	25	4,920	110-040-040	110-040-440	110-040-640
45	32	-	188,0	180,0	-	25	6,230	110-040-045	-	-
48	32	-	200,0	192,0	-	25	7,050	110-040-048	-	-
50	32	-	208,0	200,0	-	25	7,700	110-040-050	-	-
52	32	-	216,0	208,0	-	30	8,270	110-040-052	-	-
56	32	-	232,0	224,0	-	30	9,600	110-040-056	-	-
60	32	-	248,0	240,0	-	30	11,060	110-040-060	110-040-460	110-040-660
76	32	-	312,0	304,0	-	30	17,800	110-040-076	-	-
80	32	-	328,0	320,0	-	30	19,800	110-040-080	-	-
95	32	-	388,0	380,0	-	30	28,100	110-040-095	-	-
120	-	-	-	-	-	-	-	-	-	-

ingrijphoek / angle d'attaque: 20°

Z*: aantal tanden / nombre de dents