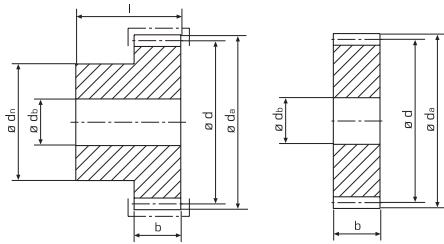


tandwielen, rechte vertanding
pignons droits
 module **3.0** (b = 25 mm)



© Aandrijvingen Gallon NV 100510

Z*	b	l	da	d	dn	db	Kg	staal acier C45 (1.0503)	inductief gehard trempeé inductif C45 (1.0503)	roestvrij inoxydable 1.4305 (X8 CrNiS 18-9)
12	25	40	42,0	36,0	25	10	0,271	111-030-012	-	-
13	25	40	45,0	39,0	30	10	0,270	111-030-013	-	-
14	25	40	48,0	42,0	30	10	0,325	111-030-014	-	-
15	25	40	51,0	45,0	30	12	0,375	111-030-015	111-030-415	111-030-615
16	25	40	54,0	48,0	30	12	0,388	111-030-016	-	-
17	25	40	57,0	51,0	40	12	0,480	111-030-017	-	-
18	25	40	60,0	54,0	40	15	0,500	111-030-018	-	-
19	25	40	63,0	57,0	40	15	0,550	111-030-019	-	-
20	25	40	66,0	60,0	40	15	0,600	111-030-020	111-030-420	111-030-620
21	25	40	69,0	63,0	45	15	0,720	111-030-021	-	-
22	25	40	72,0	66,0	50	15	0,775	111-030-022	-	-
23	25	40	75,0	69,0	50	15	0,845	111-030-023	-	-
24	25	40	78,0	72,0	50	15	0,860	111-030-024	-	-
25	25	40	81,0	75,0	50	15	0,955	111-030-025	111-030-425	111-030-625
28	25	40	90,0	84,0	60	15	1,344	111-030-028	-	-
30	25	40	96,0	90,0	60	20	1,450	111-030-030	111-030-430	111-030-630
36	25	40	114,0	108,0	70	20	2,150	111-030-036	-	-
38	25	40	120,0	114,0	70	20	2,329	111-030-038	-	-
40	25	40	126,0	120,0	80	20	2,680	111-030-040	111-030-440	111-030-640
45	25	-	141,0	135,0	-	20	2,700	110-030-045	-	-
48	25	-	150,0	144,0	-	20	3,100	110-030-048	-	-
50	25	-	156,0	150,0	-	20	3,364	110-030-050	-	-
52	25	-	162,0	156,0	-	25	3,510	110-030-052	-	-
56	25	-	174,0	168,0	-	25	4,280	110-030-056	-	-
60	25	-	186,0	180,0	-	25	4,840	110-030-060	110-030-460	110-030-660
76	25	-	234,0	228,0	-	25	7,813	110-030-076	-	-
80	25	-	246,0	240,0	-	25	8,600	110-030-080	-	-
95	25	-	291,0	285,0	-	25	12,290	110-030-095	-	-
120	-	-	-	-	-	-	-	-	-	-

ingrijphoek / angle d'attaque: 20°

Z*: aantal tanden / nombre de dents