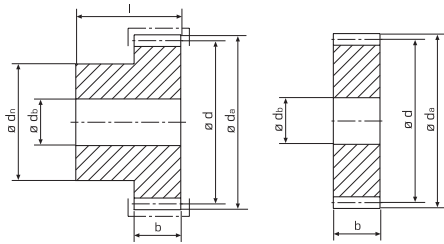


tandwielen, rechte vertanding  
*pignons droits*  
 module **2.0** (b = 16 mm)



© Aandrijvingen Gallon NV 100510

Z*	b	l	da	d	dn	db	Kg	staal acier C45 (1.0503)	inductief gehard trempé inductif C45 (1.0503)	roestvrij inoxydable 1.4305 (X8 CrNiS 18-9)
12	16	30	28,0	24,0	18	8	0,068	111-020-012	-	-
13	16	30	30,0	26,0	20,5	8	0,084	111-020-013	-	-
14	16	30	32,0	28,0	22,5	8	0,100	111-020-014	-	-
15	16	30	34,0	30,0	24	8	0,118	111-020-015	111-020-415	111-020-615
16	16	30	36,0	32,0	25	8	0,134	111-020-016	-	-
17	16	30	38,0	34,0	27,5	8	0,160	111-020-017	-	-
18	16	30	40,0	36,0	28	10	0,166	111-020-018	-	-
19	16	30	42,0	38,0	28	10	0,180	111-020-019	-	-
20	16	30	44,0	40,0	28	10	0,195	111-020-020	111-020-420	111-020-620
21	16	30	46,0	42,0	30	10	0,218	111-020-021	-	-
22	16	30	48,0	44,0	30	10	0,238	111-020-022	-	-
23	16	30	50,0	46,0	30	10	0,255	111-020-023	-	-
24	16	30	52,0	48,0	30	10	0,272	111-020-024	-	-
25	16	30	54,0	50,0	30	10	0,285	111-020-025	111-020-425	111-020-625
28	16	30	60,0	56,0	40	10	0,406	111-020-028	-	-
30	16	30	64,0	60,0	40	12	0,488	111-020-030	111-020-430	111-020-630
36	16	30	76,0	72,0	50	12	0,670	111-020-036	-	-
38	16	30	80,0	76,0	50	12	0,710	111-020-038	-	-
40	16	30	84,0	80,0	50	12	0,760	111-020-040	111-020-440	111-020-640
45	16	30	94,0	90,0	60	12	1,072	111-020-045	-	-
48	16	30	100,0	96,0	60	12	1,181	111-020-048	-	-
50	16	30	104,0	100,0	70	15	1,351	111-020-050	-	-
52	16	30	108,0	104,0	70	15	1,433	111-020-052	-	-
56	16	30	116,0	112,0	70	15	1,606	111-020-056	-	-
60	16	30	124,0	120,0	80	15	1,910	111-020-060	111-020-460	111-020-660
76	16	-	156,0	152,0	-	16	2,240	110-020-076	-	-
80	16	-	164,0	160,0	-	16	2,474	110-020-080	-	-
95	16	-	194,0	190,0	-	16	3,520	110-020-095	-	-
120	16	-	244,0	240,0	-	20	5,587	110-020-120	-	-

ingrijphoek / angle d'attaque: 20°

Z\*: aantal tanden / nombre de dents