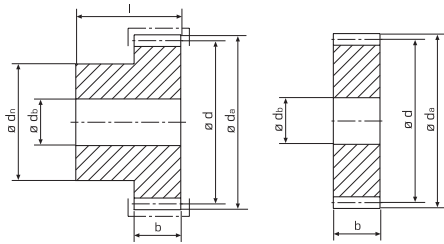


tandwielen, rechte vertanding
pignons droits
 module **1.5** (b = 12 mm)



© Aandrijvingen Gallon NV 100510

Z*	b	l	da	d	dn	db	Kg	staal acier C45 (1.0503)	inductief gehard trempeé inductif C45 (1.0503)	roestvrij inoxydable 1.4305 (X8 CrNiS 18-9)
12	12	25	21,0	18,0	14	6	0,030	111-015-012	-	-
13	12	25	22,5	19,5	15	6	0,038	111-015-013	-	-
14	12	25	24,0	21,0	16,5	6	0,046	111-015-014	-	-
15	12	25	25,5	22,5	18	6	0,057	111-015-015	111-015-415	111-015-615
16	12	25	27,0	24,0	18	6	0,060	111-015-016	-	-
17	12	25	28,5	25,5	20	6	0,068	111-015-017	-	-
18	12	25	30,0	27,0	20	8	0,073	111-015-018	-	-
19	12	25	31,5	28,5	20	8	0,082	111-015-019	-	-
20	12	25	33,0	30,0	20	8	0,097	111-015-020	111-015-420	111-015-620
21	12	25	34,5	31,5	25	8	0,110	111-015-021	-	-
22	12	25	36,0	33,0	25	8	0,118	111-015-022	-	-
23	12	25	37,5	34,5	25	8	0,126	111-015-023	-	-
24	12	25	39,0	36,0	25	8	0,135	111-015-024	-	-
25	12	25	40,5	37,5	25	8	0,142	111-015-025	111-015-425	111-015-625
28	12	25	45,0	42,0	30	10	0,178	111-015-028	-	-
30	12	25	48,0	45,0	30	10	0,195	111-015-030	111-015-430	111-015-630
36	12	25	57,0	54,0	40	10	0,315	111-015-036	-	-
38	12	25	60,0	57,0	40	10	0,348	111-015-038	-	-
40	12	25	63,0	60,0	40	10	0,355	111-015-040	111-015-440	111-015-640
45	12	25	70,5	67,5	45	10	0,445	111-015-045	-	-
48	12	25	75,0	72,0	45	10	0,525	111-015-048	-	-
50	12	25	78,0	75,0	50	12	0,560	111-015-050	-	-
52	12	25	81,0	78,0	50	12	0,590	111-015-052	-	-
56	12	25	87,0	84,0	50	12	0,660	111-015-056	-	-
60	12	25	93,0	90,0	60	12	0,815	111-015-060	111-015-460	111-015-660
76	12	-	117,0	114,0	-	16	0,895	110-015-076	-	-
80	12	-	123,0	120,0	-	16	1,031	110-015-080	-	-
95	12	-	145,5	142,5	-	16	1,450	110-015-095	-	-
120	12	-	183,0	180,0	-	16	2,336	110-015-120	-	-

ingrijphoek / angle d'attaque: 20°

Z*: aantal tanden / nombre de dents